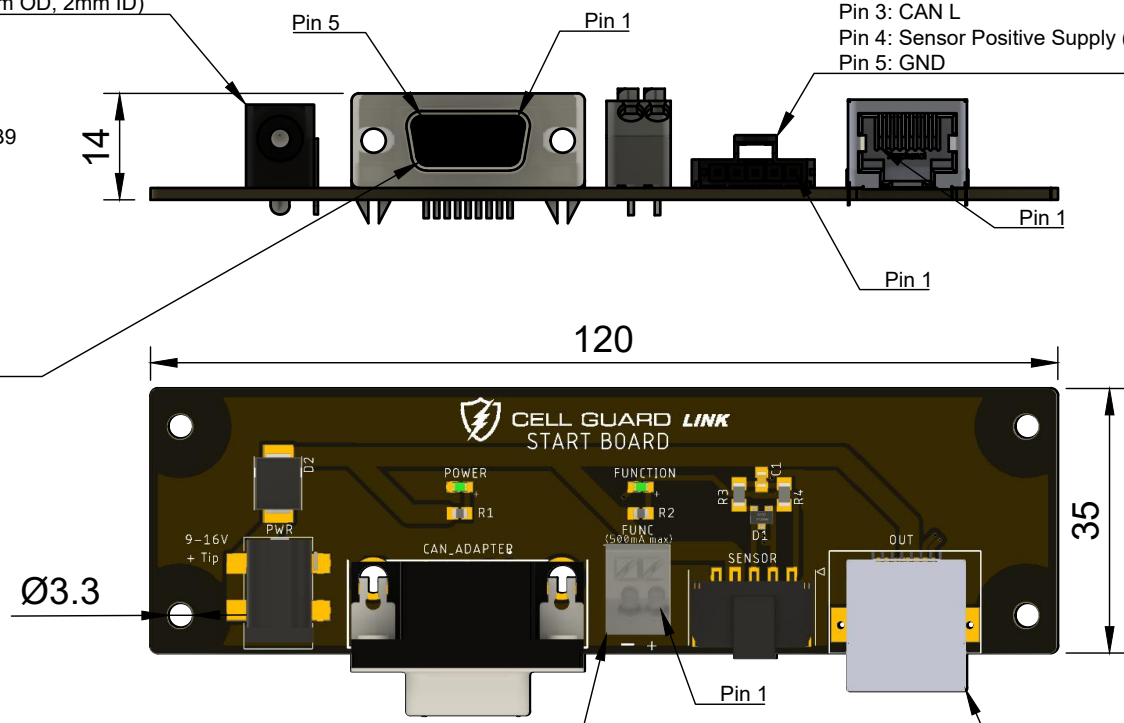


9-16VDC Power Jack  
 Current (max): 3A  
 Positive Tip (6.4mm OD, 2mm ID)

Molex Nano Fit Sensor Connector  
 Mating PN: Molex Nano Fit 1053071205  
 Pin 1: Function Pin  
 Pin 2: CAN H  
 Pin 3: CAN L  
 Pin 4: Sensor Positive Supply (voltage supplied to the board)  
 Pin 5: GND

DB9 Female  
 Mates with a male DB9  
 Pin 1: NC  
 Pin 2: CAN L  
 Pin 3: GND  
 Pin 4: NC  
 Pin 5: GND  
 Pin 6: GND  
 Pin 7: CAN H  
 Pin 8: NC  
 Pin 9: NC



Function Pin Load Push In Terminal Block  
 AWG: 16 - 24  
 Current (max): 500mA  
 Pin 1: Positive Supply (voltage supplied to the board)  
 Pin 2: GND

RJ45 Link Board Extender  
 Pin 1-3: GND  
 Pin 4-6: Positive Supply (voltage supplied to the board)  
 Pin 7: CAN L  
 Pin 8: CAN H

Dept. <b>MECH</b>	Technical reference <b>Dimensions</b>	Created by <b>JH</b>	<b>02/07/2023</b>	Approved by <b>CB</b>	<b>02/07/2023</b>
Scale 1:1 Units: mm Mass: 30g		Document type <b>Drawing</b>		Document status <b>Draft Release</b>	
		Title <b>Cell Guard Link Start Board</b>		DWG No. <b>ENG_MEC_DRW_CGSB_V3</b>	
		Rev. <b>0.1</b>	Date of issue <b>02/07/2023</b>	Sheet <b>1/1</b>	